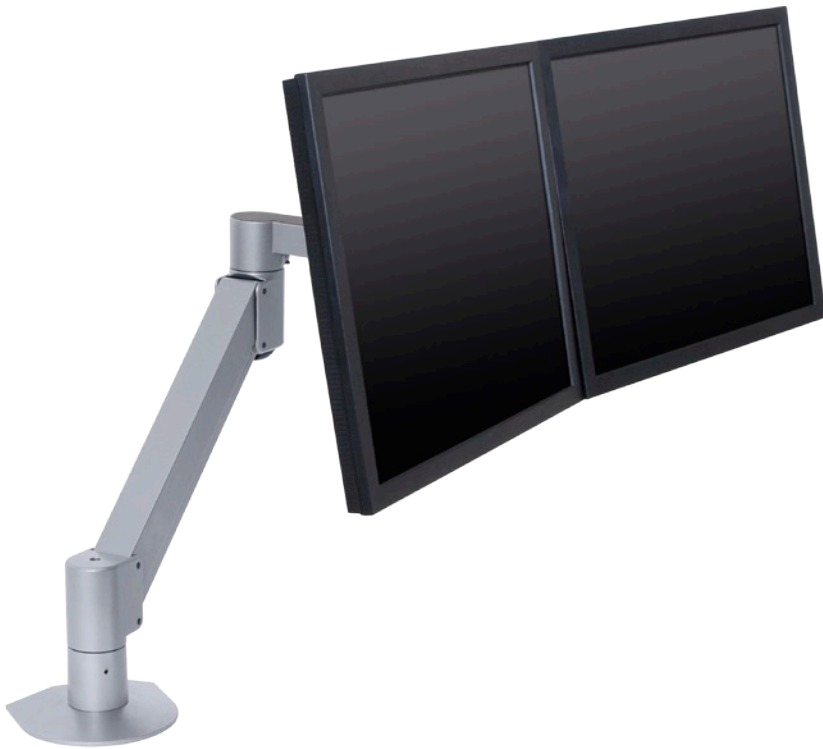


Model 7500-Wing

Dual LCD Arm



Do you use two monitors? With the 7500-Wing, both monitors will float above your desk top, allowing you to quickly and easily adjust monitor height and position. Monitors are fixed in a side-by-side configuration, allowing you to move both simultaneously. The 7500-Wing incorporates cable management, allowing you to thread cables right through the arm, keeping your work space clean and organized.

FEATURES

- ▲ Gas arm "floats" monitors above desk top for instant height adjustment
- ▲ Includes FLEXmount™ – six different mounting options in one kit
- ▲ Quick-install/quick-release mechanism instantly and securely snaps monitors into position
- ▲ Compatible with all VESA® monitors – includes 75mm and 100mm VESA® mounting plates
- ▲ Includes cable management system – cables concealed in arm



Rotate monitors from landscape to portrait



Arm collapses upon itself to save space



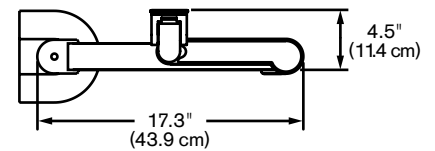
Quick-install/quick-release

Model 7500 Wing

Specifications



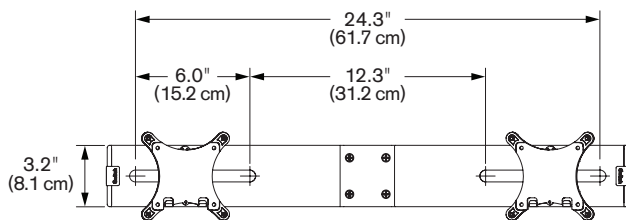
ARM CAPABILITIES



TOP VIEW
Arm Folded

- Vertical range**..... +/- 9". (22.9 cm) from horizontal
- Horizontal range**..... 27". (68.6 cm)
- Rotation**..... 360 degrees at three joints
- Monitor tilt**..... 200 degrees
- Monitor pivot**..... Landscape to portrait
- Monitor compatibility**..... VESA®. 75mm and 100mm.
- Cable management**..... Cables are concealed in arm
- Mounting options**..... FLEXmount™, Slatwall, Wall, Thru-Desk
- Monitor weight/model number**..... 3.5 - 13.5 lbs. (1.6 - 6.1 kg) / 7500-Wing-1000
9 - 21 lbs. (4.1 - 9.5 kg) / 7500-Wing-1500

WING BRACKET CAPABILITIES



Max monitor width*..... 23". (58.4 cm)** per monitor

*. Monitor width is measured from end to end of the monitor as shown here: 
 **. This measurement is based on a monitor depth of 2.5" (6.3 cm).
 .. The depth of the monitor will have a slight effect on the overall max dimension.

FLEXMOUNT™ CONFIGURATIONS

